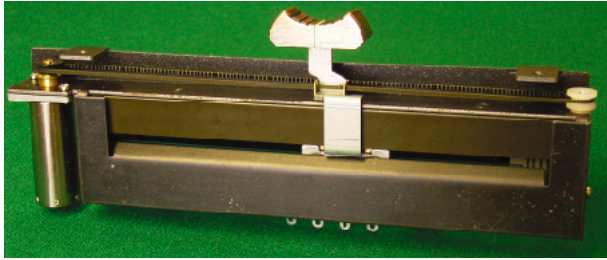




MF-914



Numbering System

MF - 914-

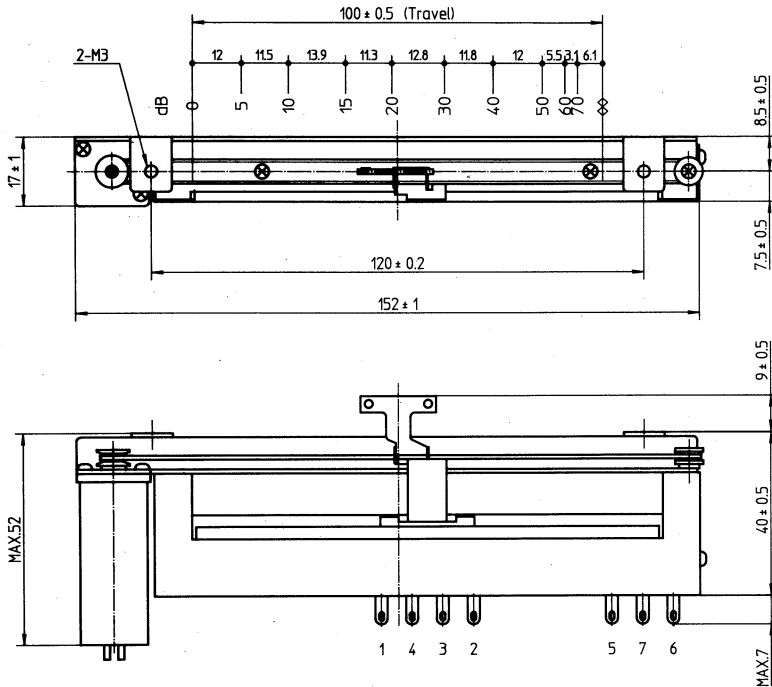
A 10 KΩ 10V

Voltage of Motor
10V
J12V
M12V or M18V

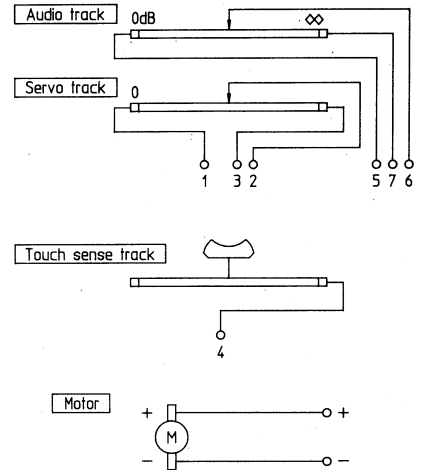
Total Resistance
Standard 10KΩ

A: Audio Taper
B: Linear Taper
2B: Linear Taper x 2

Dimensions



Circuits



Specifications

Model
Output Law

MF-914
Audio Taper or Linear Taper
or Linear Taper X 2
10KΩ(Standard)
0~20dB ±1.0dB
(at 10dB ±0.5dB)
~40dB ±2.0dB

Option
Knob : CP-2-□

Total Resistance ±20%
Attenuation Accuracy

Insertion Loss Maximum
Cut off at 15KHz Minimum

0.5dB
100dB
Not to Exceed 20V DC.
50MΩ or More at DC 500V

Voltage Rating
Insulation Resistance