

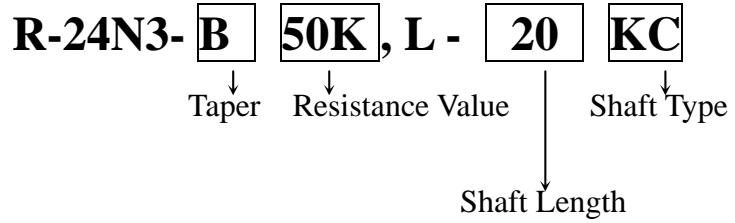


**24mm Metal Shaft Rotary Potentiometer**

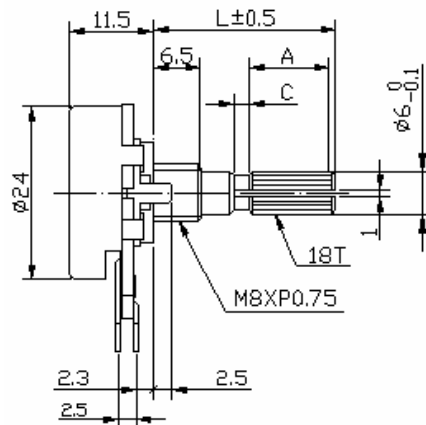
**R-24N3**



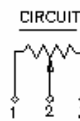
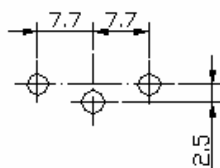
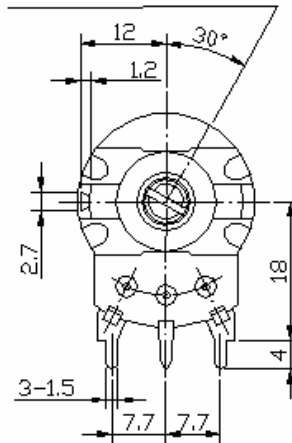
**Part Number**



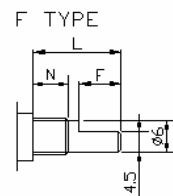
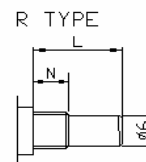
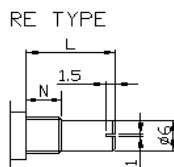
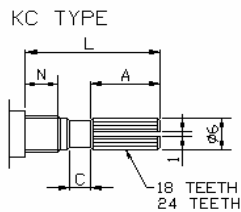
**Dimensions**



FULL C.C.W POSITION



**Shaft Type**



Ni6.5m/m

SHAFT-TYPE	L	10	15	20	25	30	35	40
KC	A	2.2	6	10	12	12	12	12
	C	0.5	1	2	2	4	4	4
F	F	2.5	7	12	12	12	12	12
R,RE	L	10	15	20	25	30	35	40

**24mm Metal Shaft Rotary Potentiometer****Electrical Characteristics**

<b>All Resistance</b>	1K ~ 1MΩ				
<b>All Resistance Tolerance</b>	± 20% (more than 1MΩ ± 30%)				
<b>Resistance Taper</b>	A. B. C. D. W. Taper				
<b>Resistance Taper Characteristics</b>	<b>A50%</b>	<b>B50%</b>	<b>C50%</b>	<b>D50%</b>	<b>W50%</b>
	15-25%	40-60%	75-85%	2-15%	45-55%
<b>Rated Power</b>	B Taper: AC500V0.5W; Other Taper: AC250V0.25 W				
<b>Residual Resistance</b>	R ≥ 250KΩ 0.1% 250KΩ > R > 10KΩ 10Ω Max. 10KΩ ≥ R 10Ω Max.				
<b>Noise</b>	47 mV max.				
<b>Insulation Resistance</b>	More than 100MΩ at DC 500V				
<b>Withstand Voltage</b>	1 minute at AC 250V				
<b>Rotational Life</b>	15,000 Cycles.				

**Mechanical Characteristics**

<b>Total Rotational Angle</b>	300° ± 10°
<b>Stopper Strength</b>	5 kgf.cm max./ 3 sec .
<b>Rotational Torque</b>	30 ~ 200gf.cm max.
<b>Push-Pull Strength</b>	10 kgf.cm max./3 sec.
<b>Solder Heat</b>	300°C, 3s (Only For Hand-Soldering)
<b>Remark</b>	Shaft: Cast Iron , Aluminum Zinc , Plastic Bushing Material: cast iron