



**9mm Snap-In Insulated Shaft Potentiometer**

**R0903G**



**Part Number**

**R0903G – B 50K , L- 20 F /H=6.5**

Taper

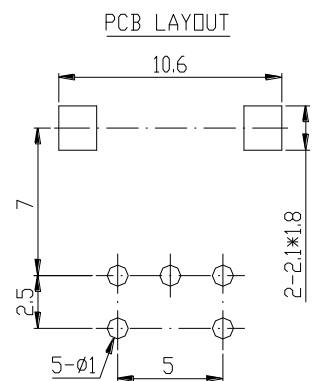
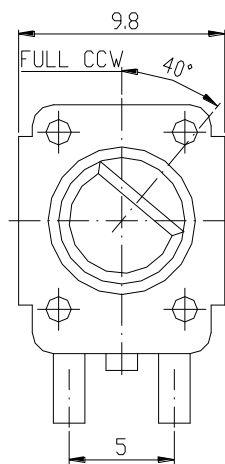
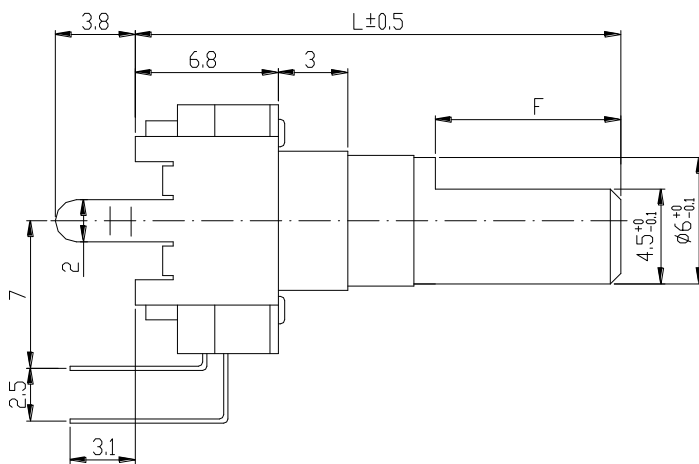
Resistance value

Shaft Length

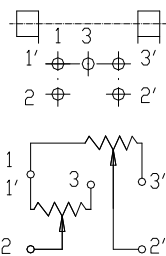
Shaft Type

High

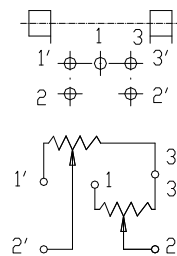
**Dimensions**



Tapers A, B



Tapers C





**9mm Snap-In Insulated Shaft Potentiometer**

**Shaft Type**

KT Type				F Type				
<b>L</b>	<b>9.5</b>	<b>15</b>	<b>20</b>	<b>L</b>	<b>15</b>	<b>20</b>	<b>25</b>	<b>30</b>
<b>A</b>	<b>-</b>	<b>6</b>	<b>7</b>	<b>F</b>	<b>6</b>	<b>7</b>	<b>12</b>	<b>12</b>

KT Type					
<b>L</b>	<b>15</b>	<b>20</b>	<b>25</b>	<b>30</b>	<b>35</b>
<b>A</b>	<b>6</b>	<b>7</b>	<b>7</b>	<b>7</b>	<b>7</b>

**9mm Snap-In Insulated Shaft Potentiometer****General**

Operating temperature	-10 °C ~ +70 °C
Manual soldering	300 °C Max 3sec

**Electrical Characteristics**

Total resistance	5KΩ ~ 250KΩ
Resistance tolerance	±30%
Resistance taper	A B C
Sliding noise	Less than 80 mV
Residual resistance	Term. 1~2 :Less than 20Ω Term. 2~3 :Less than 40Ω
Insulation resistance	More than 100MΩ at DC 250V
Rated power(W)	0.03W
Max. Operating voltage	AC 50V (for AC only)
Withstand voltage	1 Minute at AC 250 V
Gang error	0dB ~ -40dB ≤ 3dB

**Mechanical Characteristics**

Total rotational angle	280° ± 5°
Rotational torque	10 ~ 80 gf.cm
Rotational stopper strength	3Kgf.cm Min
Shaft push-pull strength	4Kgf. Max
Rotational life	15,000 Cycles.