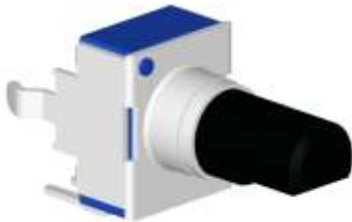




## 9mm Snap-In Insulated Shaft Potentiometer

**R0904N**



**Part Number**

**R0904N – B 50K , L- 20 F**

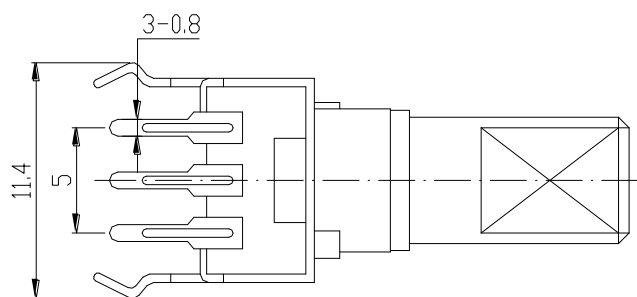
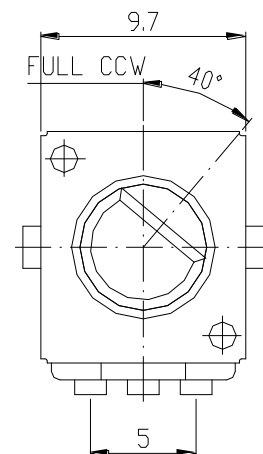
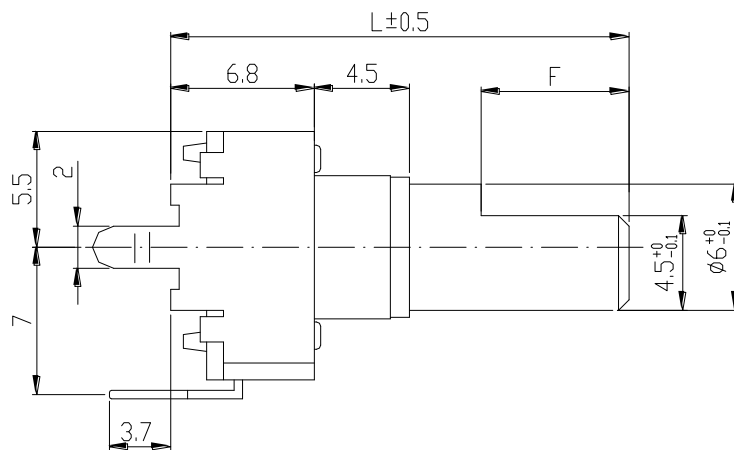
Taper

Shaft Length

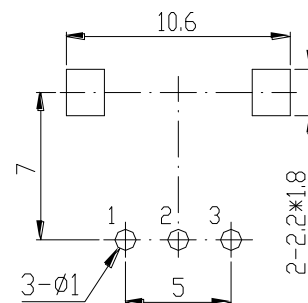
Resistance value

Shaft Type

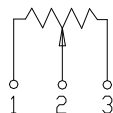
### Dimensions



PCB LAYOUT



CIRCUIT





**9mm Snap-In Insulated Shaft Potentiometer**

**Shaft Type**

KC Type				KS Type				KQ Type			
<b>L</b>	<b>15</b>	<b>20</b>	<b>25</b>	<b>L</b>	<b>15</b>	<b>20</b>	<b>25</b>	<b>L</b>	<b>15</b>	<b>20</b>	<b>25</b>
<b>A</b>	<b>7</b>	<b>7</b>	<b>7</b>	<b>A</b>	<b>7</b>	<b>7</b>	<b>7</b>	<b>A</b>	<b>6</b>	<b>7</b>	<b>7</b>

KT Type					F Type			
<b>L</b>	<b>9</b>	<b>15</b>	<b>20</b>	<b>25</b>	<b>L</b>	<b>15</b>	<b>20</b>	<b>25</b>
<b>A</b>	<b>--</b>	<b>6</b>	<b>7</b>	<b>7</b>	<b>A</b>	<b>6</b>	<b>7</b>	<b>12</b>

**9mm Snap-In Insulated Shaft Potentiometer****General**

<b>Operating temperature</b>	<b>-10 °C ~ +70 °C</b>
<b>Manual soldering</b>	<b>300 °C Max 3sec</b>

**Electrical Characteristics**

<b>Total resistance</b>	<b>500Ω ~ 500KΩ</b>
<b>Resistance tolerance</b>	<b>±20%</b>
<b>Resistance taper</b>	<b>A B C</b>
<b>Sliding noise</b>	<b>Less than 80 mV</b>
<b>Residual resistance</b>	<b>Term. 1~2 :Less than 20Ω Term. 2~3 :Less than 40Ω</b>
<b>Insulation resistance</b>	<b>More than 100MΩ at DC 250V</b>
<b>Rated power(W)</b>	<b>0.05W</b>
<b>Max. Operating voltage</b>	<b>AC 50V / DC 20V</b>
<b>Withstand voltage</b>	<b>1 Minute at AC 250 V</b>

**Mechanical Characteristics**

<b>Total rotational angle</b>	<b>280° ± 10°</b>
<b>Rotational torque</b>	<b>30 ~ 150 gf.cm</b>
<b>Rotational stopper strength</b>	<b>3Kgf.cm Min</b>
<b>Shaft push-pull strength</b>	<b>4Kgf. Max</b>
<b>Rotational life</b>	<b>15,000 Cycles.</b>