



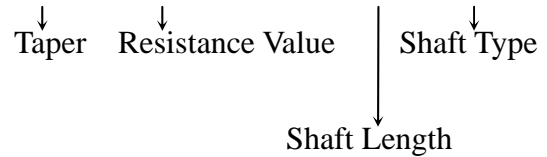
12mm Metal Shaft Rotary Potentiometer

RK1234G

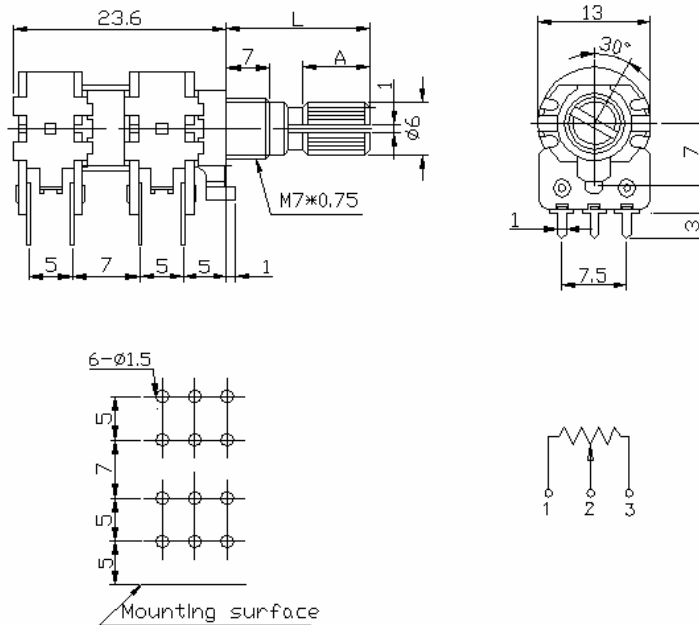


Part Number

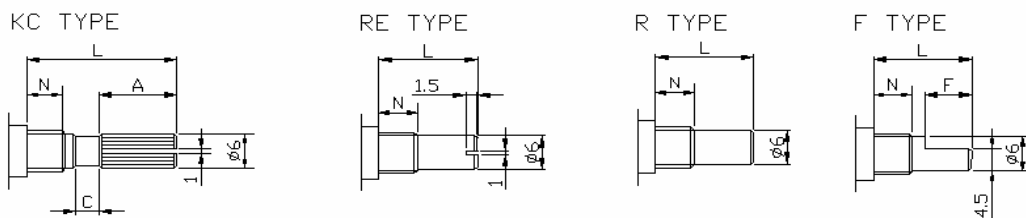
RK1234G - B 50K, L - 20 KC



Dimensions



Shaft Type



N:7m/m

SHAFT-TYPE	L	10	15	20	25	30	35	40
KC	A	2.2	6	10	12	12	12	12
	C	0.5	1	2	2	4	4	4
F	F	2.5	7	12	12	12	12	12
R,RE	L	10	15	20	25	30	35	40



12mm Metal Shaft Rotary Potentiometer

Electrical Characteristics

Total Resistance	1K ~ 500K Ω				
Total Resistance Tolerance	$\pm 20\%$ (More than 1M Ω $\pm 30\%$)				
Resistance Taper	A. B. C. D. W. Taper				
Resistance Taper Characteristics	A50%	B50%	C50%	D50%	W50%
	15-25%	40-60%	75-85%	2-15%	45-55%
Rated Power	B Taper : 0.1 W; Other Taper : 0.05 W				
Residual Resistance	$R \geq 250K\Omega$ 0.1% $250K\Omega > R > 10K\Omega$ 20 Ω max. (between Term. 1, 2) $10K\Omega \geq R$ 20 Ω max. (between Term. 2, 3)				
Max. Operation Voltage	AC 30V , DC				
Noise	47 mV Max.				
Insulation Resistance	DC 250V 100M Ω				
Withstand Voltage	1 minute at AC 300V				
Rotational Life	15,000 Cycles				

Mechanical Characteristics

Total Rotational Angle	300° \pm 10°
Stopper Strength	3 kgf.cm max./3sec.
Rotational Torque	20~200gf.cm
Pull-Push Strength	8 kgf.cm max./ 10sec.
Soldering Heat	300°C , 3s. (Only for Hand-Soldering)
Remark	Shaft: Cast Iron or Aluminum Zinc Bushing Material: Cast Iron or Aluminum Zinc