



**9mm Metal Shaft Rotary Potentiometer**

**RK0951G**



**Part Number**

**RK0951G – B 50K, L- 20 KC/N=5**

Taper

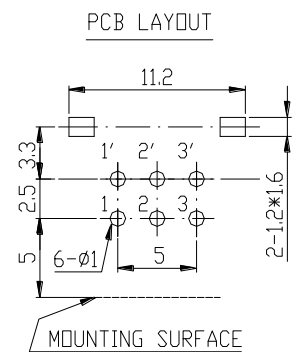
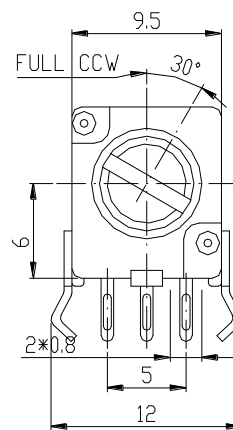
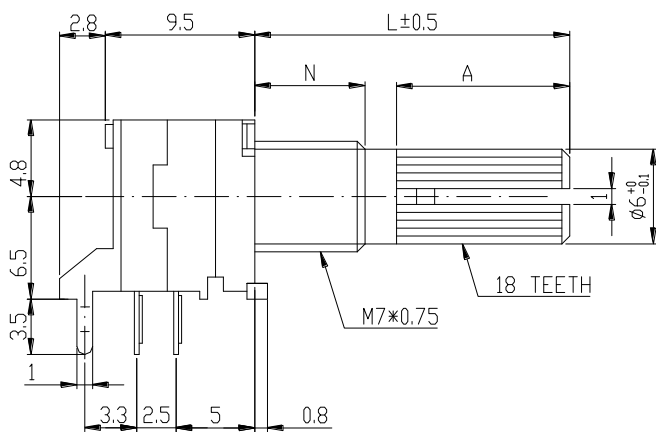
Shaft Length

Bush Length

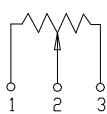
Resistance value

Shaft Type

**Dimensions**

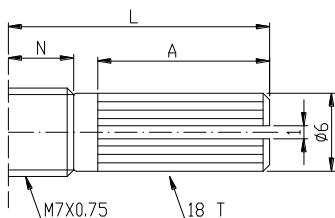


**CIRCUIT**



**Shaft Type**

**KC Type**



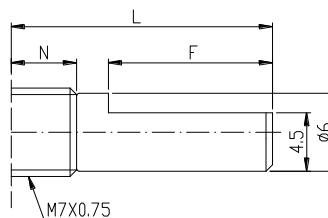
N=5mm

L	10KC	12.5KC	15KC	20KC
A	4	7	7	12

N=7mm

L	15KC	20KC	25KC
A	7	12	12

**F Type**



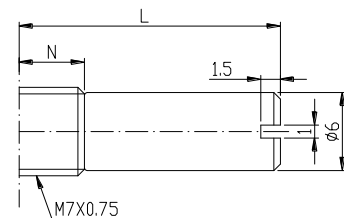
N=5mm

L	15F	20F
F	7	12

N=7mm

L	15F	20F	25F
F	7	12	12

**RE Type**



N=5mm

L	8RE	10RE	15RE
---	-----	------	------

N=7mm

L	15RE
---	------

**9mm Metal Shaft Rotary Potentiometer****General**

Operating temperature	-10 °C ~ +70 °C
Manual soldering	300 °C Max 3sec

**Electrical Characteristics**

Total resistance	1K $\Omega$ ~ 500K $\Omega$
Resistance tolerance	$\pm 20\%$ (More Than 1M $\Omega$ $\pm 30\%$ )
Resistance taper	A B C W
Sliding noise	Less than 68 mV
Residual resistance	$\leq 20 \Omega$
Insulation resistance	More than 100M $\Omega$ at DC 250V
Rated power(W)	0.05W
Max. Operating voltage	50V AC
Withstand voltage	1 Minute at AC 300 V
Gang error	Linear (B) taper : 0 ~ -20dB $\leq 2$ dB A/C Other tapers : 0 ~ -40dB $\leq 2$ dB

**Mechanical Characteristics**

Total rotational angle	300° $\pm 5^\circ$
Rotational torque	20 ~ 250 gf.cm
Rotational stopper strength	4Kgf.cm Min
Shaft push-pull strength	8Kgf. Max
Rotational life	10,000 Cycles.