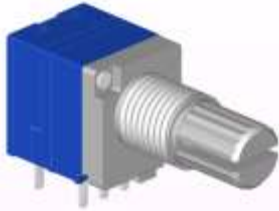




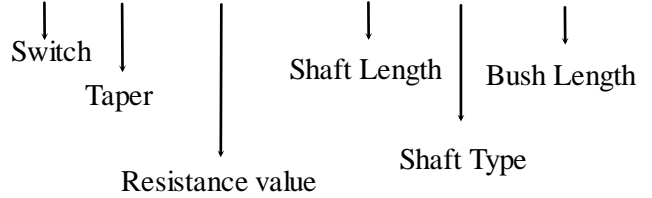
9mm Metal Shaft Rotary Potentiometer

RK0971S

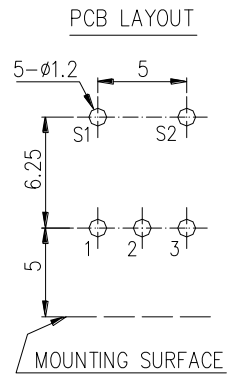
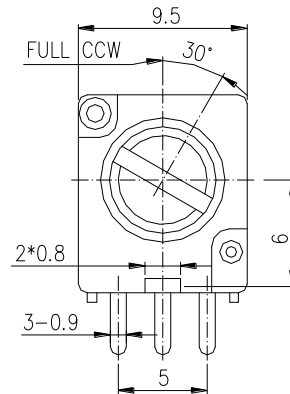
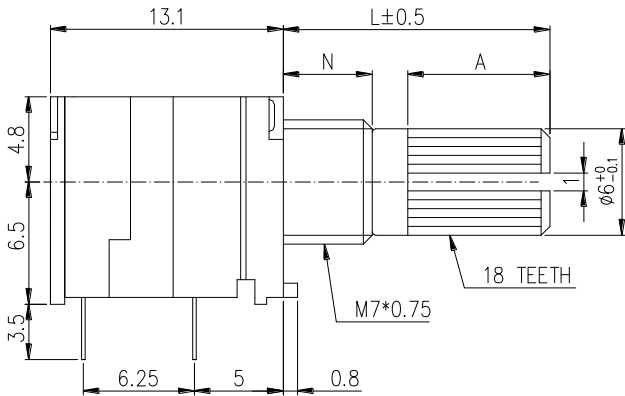


Part Number

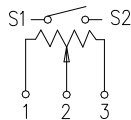
RK0971 S – B 50K, L- 20 KC/N=5



Dimensions

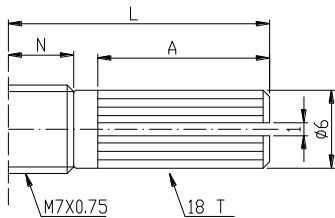


CIRCUIT



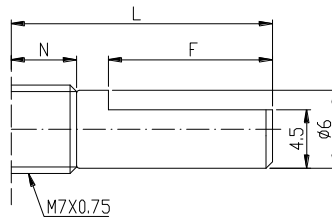
Shaft Type

KC Type



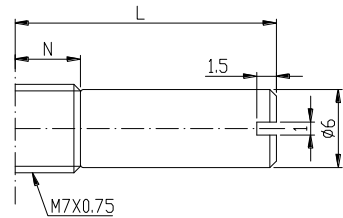
N=5mm				
L	10KC	12.5KC	15KC	20KC
A	4	7	7	12
N=7mm				
L	15KC	20KC	25KC	
A	7	12	12	

F Type



N=5mm			
L	15F	20F	
F	7	12	
N=7mm			
L	15F	20F	25F
F	7	12	12

RE Type



N=5mm			
L	8RE	10RE	15RE
N=7mm			
L	15RE		

**9mm Metal Shaft Rotary Potentiometer****General**

Operating temperature	-10 °C ~ +70 °C
Manual soldering	300 °C Max 3sec

Electrical Characteristics

Total resistance	1K Ω ~ 500K Ω
Resistance tolerance	$\pm 20\%$ (More Than 1M Ω $\pm 30\%$)
Resistance taper	A B C W
Sliding noise	Less than 68 mV
Residual resistance	$\leq 20 \Omega$
Switch contact resistance	0.05 Ω
Insulation resistance	More than 100M Ω at DC 250V
Rated power(W)	0.05W
Switch rated power	DC 16V. 1A
Max. Operating voltage	50V AC
Withstand voltage	1 Minute at AC 300 V

Mechanical Characteristics

Total rotational angle	300° \pm 5°
Switch angle	$\leq 50^\circ$
Rotational torque	20 ~ 250 gf.cm
Switch action	400 gf.cm
Rotational stopper strength	4Kgf.cm Min
Shaft push-pull strength	10Kgf. Max
Rotational life	10,000 Cycles. (Switch life: 10,000 Cycles)