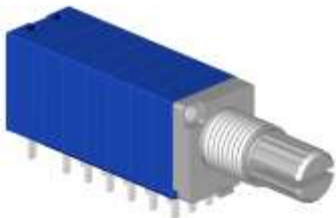




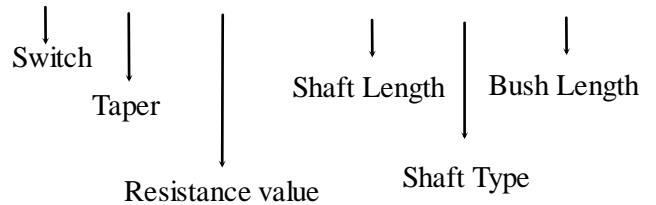
9mm Metal Shaft Rotary Potentiometer

RK0976S

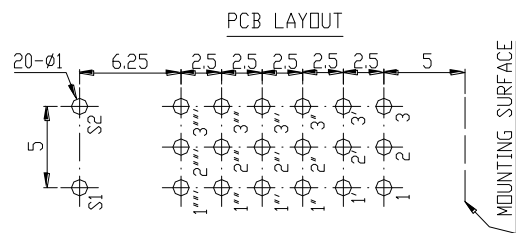
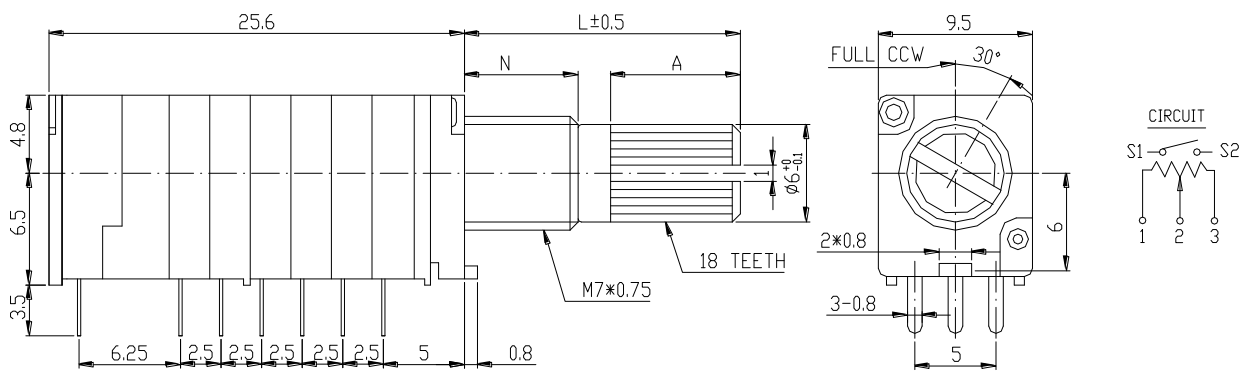


Part Number

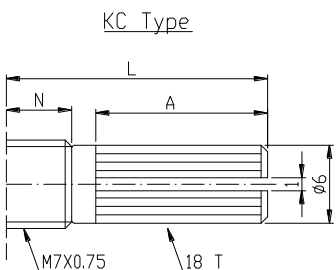
RK0976 S - B 50K, L- 20 KC/N=5



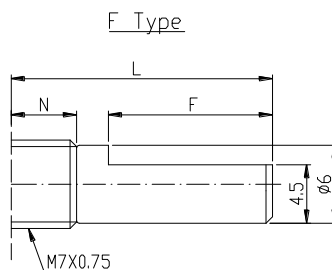
Dimensions



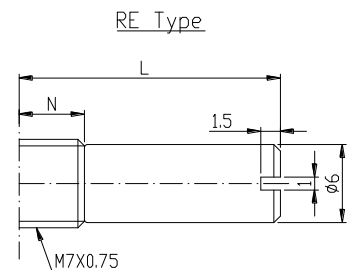
Shaft Type



N=5mm			
L	10KC	12.5KC	15KC
A	4	7	12
N=7mm			
L	15KC	20KC	25KC
A	7	12	12



N=5mm	
L	15F
F	7
N=7mm	
L	15F
F	7



N=5mm		
L	8RE	10RE
N=7mm		
L	15RE	

**9mm Metal Shaft Rotary Potentiometer****General**

Operating temperature	-10 °C ~ +70 °C
Manual soldering	300 °C Max 3sec

Electrical Characteristics

Total resistance	1KΩ ~ 500KΩ
Resistance tolerance	±20% (More Than 1MΩ ± 30%)
Resistance taper	A B C W
Sliding noise	Less than 68 mV
Residual resistance	≤ 20 Ω
Switch contact resistance	0.05 Ω
Insulation resistance	More than 100MΩ at DC 250V
Rated power(W)	0.05W
Switch rated power	DC 16V. 1A
Max. Operating voltage	50V AC
Withstand voltage	1 Minute at AC 300 V
Gang error	Linear (B) taper : 0 ~ -20dB ≤ 2dB A/C Other tapers : 0 ~ -40dB ≤ 2dB

Mechanical Characteristics

Total rotational angle	300° ± 5°
Switch angle	≤ 50°
Rotational torque	20 ~ 250 gf.cm
Switch action	400 gf.cm
Rotational stopper strength	4Kgf.cm Min
Shaft push-pull strength	10Kgf. Max
Rotational life	10,000 Cycles. (Switch life: 10,000 Cycles)