



**12mm Metal Shaft Rotary Potentiometer**

**RK1242N**

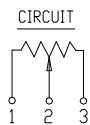
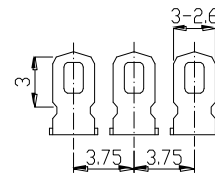
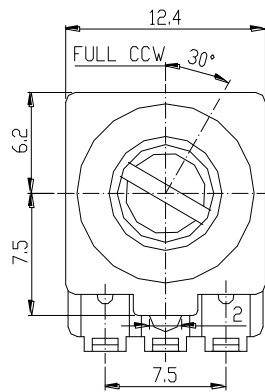
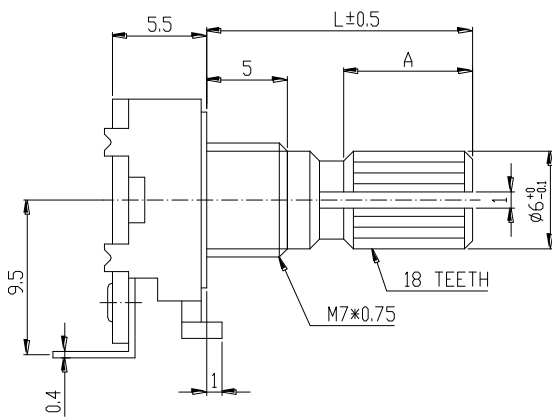


**Part Number**

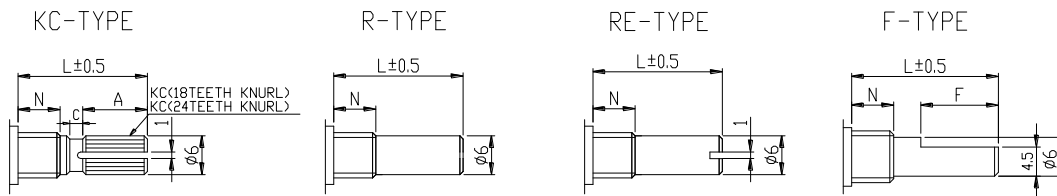
**RK1242N - B 50K , L - 20 KC**

↓                      ↓                      ↓                      ↓  
 Taper      Resistance Value      Shaft Length      Shaft Type

**Dimensions**



**Shaft Type**



N=5 m/m								
SHAFT-TYPE	L	15	20	25	30	35	40	
KC	A	6	10	12	12	12	12	
	C	1	2	2	4	4	4	
	F	7	12	12	12	12	12	
R , RE	L	15	20	25	30	35	40	

**12mm Metal Shaft Rotary Potentiometer****Electrical Characteristics**

<b>Total Resistance</b>	<b>1K ~ 500K<math>\Omega</math></b>				
<b>Total Resistance Tolerance</b>	<b><math>\pm 20\%</math> (More than 1M<math>\Omega</math> <math>\pm 30\%</math>)</b>				
<b>Resistance Taper</b>	<b>A. B. C. D. W. Taper</b>				
<b>Resistance Taper Characteristics</b>	<b>A50%</b>	<b>B50%</b>	<b>C50%</b>	<b>D50%</b>	<b>W50%</b>
	<b>15-25%</b>	<b>40-60%</b>	<b>75-85%</b>	<b>2-15%</b>	<b>45-55%</b>
<b>Rated Power</b>	<b>B Taper : 0.1 W; Other Taper : 0.05 W</b>				
<b>Residual Resistance</b>	<b>R <math>\geq</math> 250K<math>\Omega</math> 0.1%</b>				
	<b>250K<math>\Omega</math> &gt; R &gt; 10K<math>\Omega</math></b>		<b>20<math>\Omega</math> max. (between Term. 1, 2)</b>		
	<b>10K<math>\Omega</math> <math>\geq</math> R</b>		<b>20<math>\Omega</math> max. (between Term. 2, 3)</b>		
<b>Max. Operation Voltage</b>	<b>AC 30V, DC</b>				
<b>Noise</b>	<b>47 mV Max.</b>				
<b>Insulation Resistance</b>	<b>DC 250V 100M<math>\Omega</math></b>				
<b>Withstand Voltage</b>	<b>1 minute at AC 300V</b>				
<b>Rotational Life</b>	<b>15,000 Cycles</b>				

**Mechanical Characteristics**

<b>Total Rotational Angle</b>	<b>300° <math>\pm</math> 10°</b>
<b>Stopper Strength</b>	<b>3 kgf.cm max./3sec.</b>
<b>Rotational Torque</b>	<b>20~200gf.cm</b>
<b>Pull-Push Strength</b>	<b>8 kgf.cm max./ 10sec.</b>
<b>Soldering Heat</b>	<b>300°C , 3s. (Only for Hand-Solde ring)</b>
<b>Remark</b>	<b>Shaft: Cast Iron or Aluminum Zinc Bushing Material: Cast Iron or Aluminum Zinc</b>