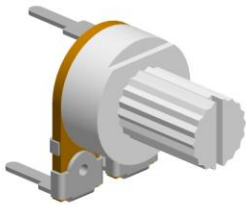




**8mm Semi-Fixed Carbon Potentiometer**

**SH085MH**



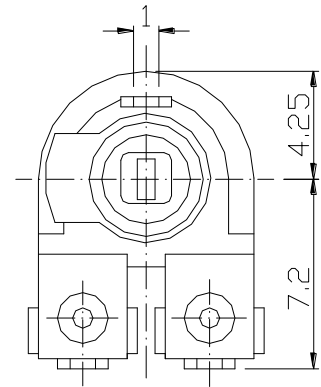
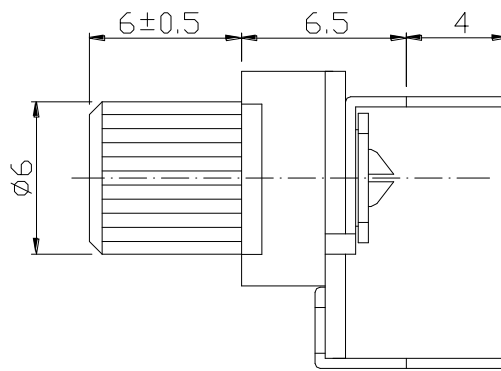
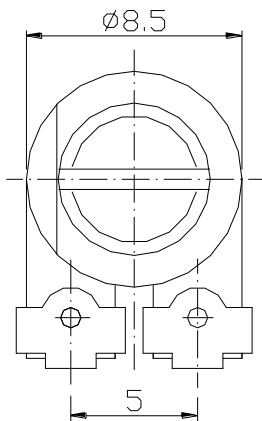
**Part Number**

**SH085MH – B 50K**

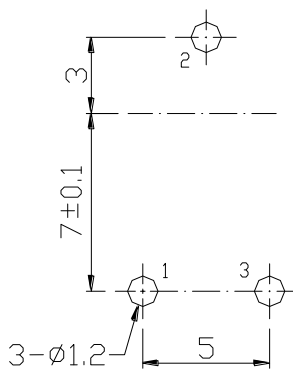
Taper  
r

Resistance value

**Dimensions**



PCB LAYOUT



CIRCUIT



**8mm Semi-Fixed Carbon Potentiometer****General**

<b>Operating temperature</b>	<b>-10 ~ +70</b>
<b>Soldering conditions</b>	<b>250±5°C Within 5 seconds</b>

**Electrical Characteristics**

<b>Total resistance</b>	<b>100Ω 2MΩ</b>
<b>Resistance tolerance</b>	<b>±30%</b>
<b>Resistance taper</b>	<b>B</b>
<b>Residual resistance</b>	<b>R 1KΩ 20Ω R 1KΩ Less than 3% of total resistance value</b>
<b>Rated power(W)</b>	<b>0.1W</b>
<b>Max. Operating voltage</b>	<b>DC 100V</b>
<b>Contact resistance variation</b>	<b>6% Max</b>

**Mechanical Characteristics**

<b>Total rotational angle</b>	<b>250°±20°</b>
<b>Rotational torque</b>	<b>40 ~ 250 gf.cm</b>
<b>Rotational stopper strength</b>	<b>0.8 Kgf-cm</b>
<b>Rotational life</b>	<b>50±5 Cycles.</b>